

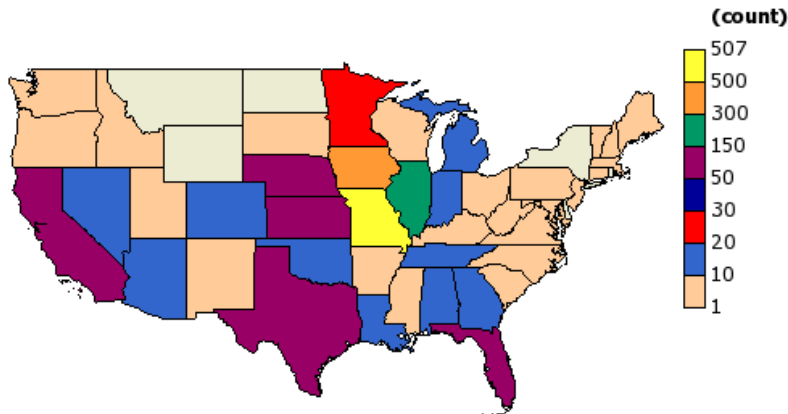
Fall 2020 Enrollment Dashboard 1/22/2020

Active Enrollment Funnel by Academic Division

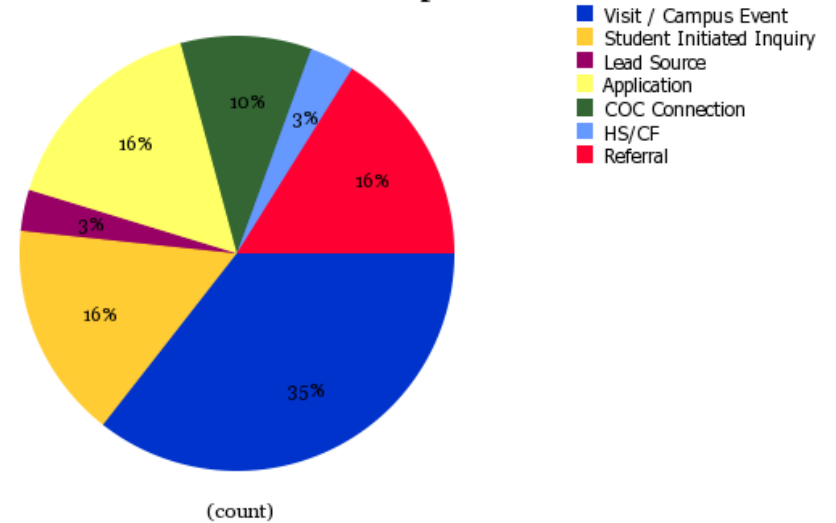
Applicant Count - Distinct	INQUIRED	PREAPP	APPLIED	APPWDOC	APPCOMP	HOLD	ACCEPTED	CONFIRM
C.H. Sandage School of Business	341	6	111	62	11	7	118	4
Division of Visual and Performing Arts	198	4	24	12	2	1	32	2
Edmund J. Gleazer School of Education	35	2	11	7	1		32	4
General	7,925	188	134	104	9	25	241	2
Health and Movement Science	101	1	20	6	3		30	2
Humanities	28		11	5		3	15	2
School of Nursing	388	8	39	26		8	77	4
Science and Mathematics	384	9	78	35	9	9	132	6
Social Science	256	3	55	29	5	7	88	5
Total(Intended Major 1 Division Description)	9,656	221	483	286	40	60	765	31

	INQUIRED	PREAPP	APPLIED	APPWDOC	APPCOMP	HOLD	ACCEPTED	CONFIRM
Community of Christ	492	21	31	26	7	3	77	10

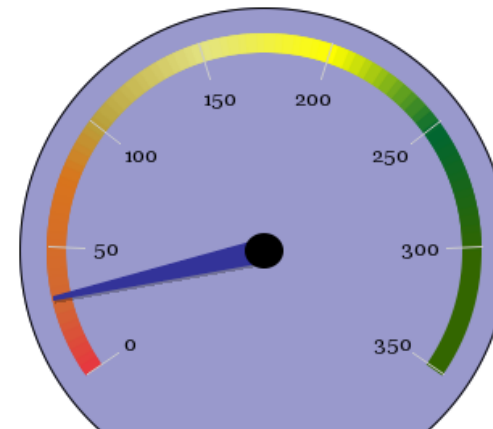
Active Applicants by State



Referral Source of Deposited Students



Deposit Count = 31



Things You Can Do to Help:

- Extend the reach of your student and program successes by sharing them with the Graceland Communications Team. Use social media!
- Facebook: [@GracelandUniversity](https://www.facebook.com/GracelandUniversity) Twitter: [@GracelandU](https://twitter.com/GracelandU) Instagram: [@GracelandUniversity](https://www.instagram.com/GracelandUniversity)