



# GU Fact Book



## GU Fact Book



Data as of Fall 2014

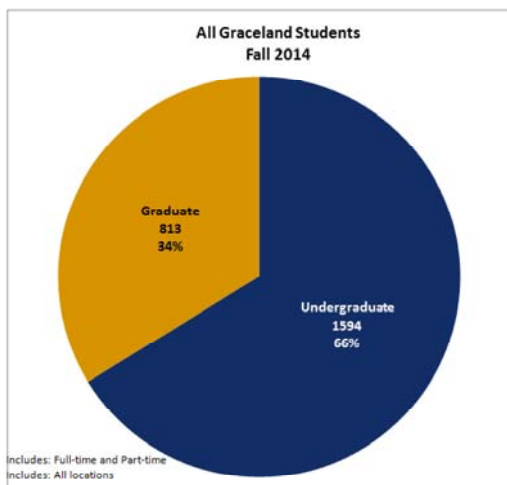
The **GU Fact Book** is prepared annually by the Institutional Research Office. The purpose of the GU Fact Book is to provide comprehensive data and easy access to the most frequently requested information about Graceland.

<< Select from the yellow folders on the left for specific location data.

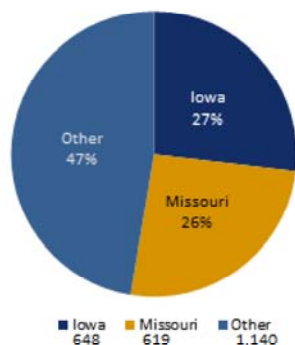
For all surveys, marketing and general information requests it is procedure to use the official locked enrollment numbers from the fall semester.

The GU Fact Book is a public document.

## GU Students



Iowa, Missouri and Remaining States  
All Graceland Students  
Fall 2014



Source: Locked Official Enrollment List

## Enrollment



## GU



Lamosi, Iowa Campus



Independence, Missouri Campus

## The University



Founded in 1895, a private, four-year liberal arts university located in Lamosi, Iowa.

- Mascot: Yellowjackets "STING"
- Colors: Gold & Blue
- Newspaper: The Tower
- Yearbook: Acacia
- Heart of America Athletic Conference (HAAC)
- National Association of Intercollegiate Athletics (NAIA)

The Independence, Missouri campus was built in 1969 and offers programs in our School of Nursing, Gleazer School of Education, Sandage School of Business and Community of Christ Seminary.

Learn more at our public website [www.graceland.edu](http://www.graceland.edu).

All Graceland Locations: 1,956 FTE (IPEDS calculation for Full-Time Equivalent )

Lamoni Undergraduate: 1,052 (full-time & part-time)

Lamoni Undergraduate: 1,012 (full-time)

High School: 178 (full-time & part-time)

Online: 934 (full-time & part-time)

Independence: 200 (full-time & part-time)

Centerville & Trenton: 43 (full-time & part-time)

*Source: Locked Official Enrollment List*

---

### Higher Learning Commission ?

---

*Institutional Research expects all constituents to use GU Fact Book data in accordance with Higher Learning Commission (HLC) standards.*

# Trends



[Access](#)
[Options](#)
[Settings](#)
[Layout](#)
[Rearrange](#)

## Graceland Trends



[Edit Content](#)

These trends include all Graceland locations.

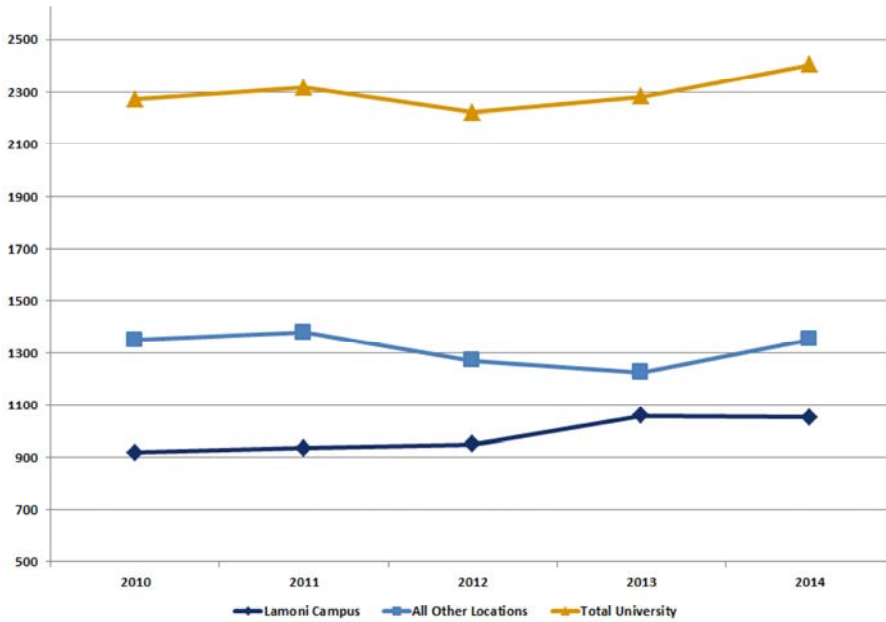
## Enrollment Trends



[Edit Content](#)

### Total Graceland Enrollment

#### 5 Year Trends



Includes: Full-time and Part-time

Source: Locked Official Enrollment List

## GU Location Trends



[Edit Content](#)

Year	Online	Face-to-Face Lamoni and Independence	Face-to-Face Other Sites	High School Dual Enrolled
2010	824	1164	158	125
2011	816	1206	149	146
2012	776	1201	100	145
2013	811	1280	70	124
2014	934	1252	43	178

Other sites: Centerville and Trenton

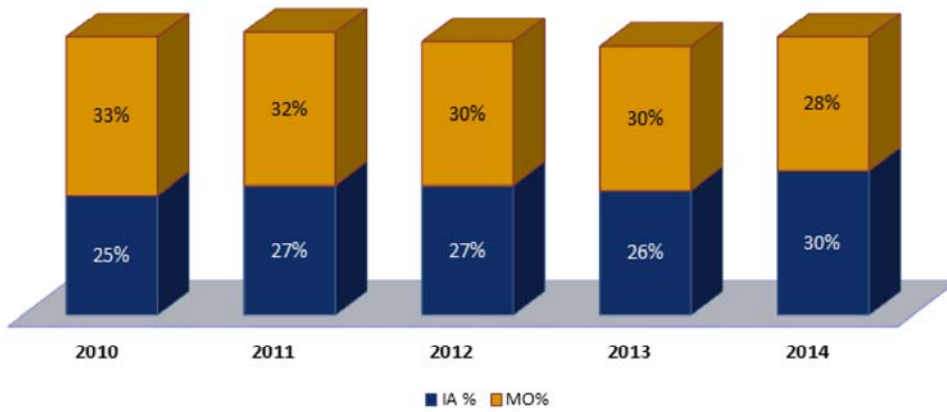
Source: Locked Official Enrollment List

## Iowa / Missouri Trends



[Edit Content](#)

### Iowa and Missouri All Undergraduate Students 5 Year Trends



Source: Locked Official Enrollment List

### Student To Faculty Ratio



[Edit Content](#)

Source: Locked Official Enrollment List

Year	All GU Programs	Lamoni Campus Only
2010	16:1	N/A
2011	15:1	15:1
2012	15:1	13:1
2013	15:1	14:1
2014	13:1	13:1

### Tenure / Tenure Track Faculty



[Edit Content](#)

Year	Faculty	Tenured			Tenure Track			Non-Tenure Track		
		M	W	Total	M	W	Total	M	W	Total
2010	79	24	17	41	8	26	34	2	2	4
2011	81	22	20	42	11	21	32	3	4	7
2012	85	20	21	41	12	19	31	5	8	13
2013	89	23	23	46	16	26	42	0	1	1
2014	90	21	24	45	14	14	28	4	13	17

### Degrees Awarded (by area/School)



[Edit Content](#)

**Undergraduate Degrees awarded per area  
July 1, 2011 - June 30, 2012**

Sandage School of Business	47
School of Nursing	99
Gleazer School of Education	98
<b>College of Liberal Arts and Sciences total</b>	<b>104</b>
Science and Math Division	13
Health and Movement Sciences Division	32
Humanities	13
Social Sciences	23
Visual and Performing Arts	12
Liberal Studies	11

**Undergraduate Degrees awarded per area  
July 1, 2012 - June 30, 2013**

Sandage School of Business	49
School of Nursing	97
Gleazer School of Education	97
<b>College of Liberal Arts and Sciences total</b>	<b>114</b>
Science and Math Division	23
Health and Movement Sciences Division	30
Humanities	11
Social Sciences	21
Visual and Performing Arts	9
Liberal Studies	20

**Undergraduate Degrees awarded per area  
July 1, 2013 - June 30, 2014**

Sandage School of Business	33
School of Nursing	88
Gleazer School of Education	88
<b>College of Liberal Arts and Sciences total</b>	<b>114</b>
Science and Math Division	15
Health and Movement Sciences Division	26
Humanities	10
Social Sciences	26
Visual and Performing Arts	16
Liberal Studies	21

Majors in the School of Business include: Accounting, Agricultural Business, Business Administration, Economics, Organizational Leadership, and Sports Management

Majors in the School of Nursing include: Bachelors of Science in Nursing and Health Care Management

Majors in the School of Education include: Elementary Education, and Mild/Moderate Special Education

College of Liberal Arts and Sciences consists of:

Majors in the Science and Math Division include: Basic Science, Biology, Chemistry, Math and Computer Science/Information Technology

Majors in the Health and Movement Science Division include: Athletic Training, Corrective Exercise and Performance Enhancement, Health, Physical Education, and Recreation

Majors in the Humanities Division include: Communications, English, Publication, Writing and Design, Religion, Religion and Philosophy, and Web Design

Majors in the Social Sciences Division include: Criminal Justice, History, Human Services, International Studies, Psychology, and Sociology

Majors in the Visual and Performing Arts include: Studio Art, Visual Communications Art, Film, Theatre and Performance Studies, Music, and Theatre

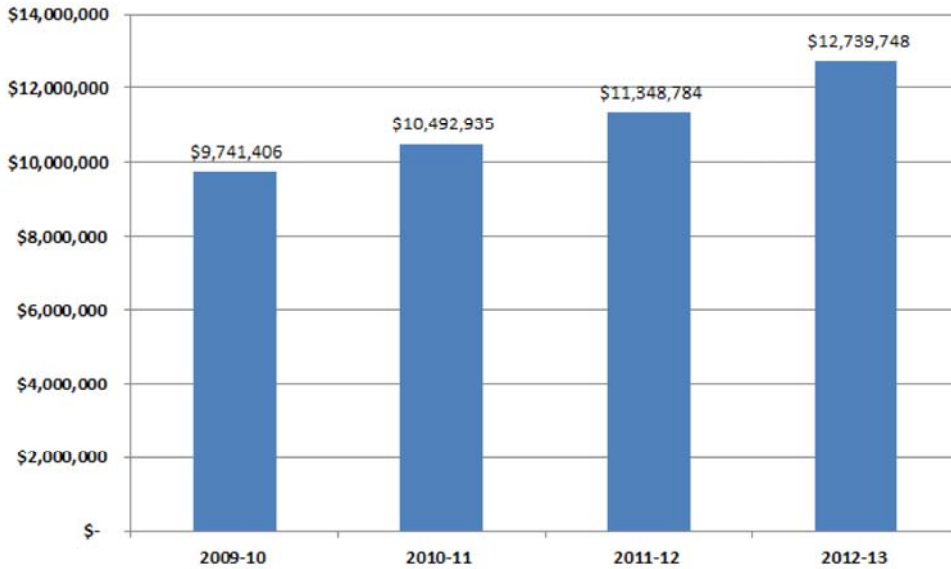
### Annual Gift Commitment Trends



[Edit Content](#)

As of May 31, 2014:

#### Annual Gift Commitments



Source: Development Office

## Lamoni



### Fall 2014



The facts provided on this page are for **Lamoni Campus Fall 2014 Undergraduate** students. Unless noted it includes full and part time students.

These figures will be used until next fall for surveys and marketing materials. Refer to the **Data Dictionary** under Resources > Institutional Research page for more details.

*Updated December 4, 2014*

### Enrollment



Total Enrollment: 1,052  
Total Enrollment: 1,012 (full-time)

Location: States: 46, Countries: 26  
Community of Christ Students: 31%  
Race/ Ethnic Diversity: 27%  
International Students: 8%  
Gender: 58% Male, 42% Female

**Total Fall 2014 Class:** 359  
First Time Freshmen: 282  
Transfers: 77

#### **Class Profile** (*first time freshmen only*):

- Average GPA: 3.08
- Average Class Rank: 55
- Average ACT: 20.4
- Average SAT: 879
- Gender: 65% Male, 35% Female
- First Generation: 23%

### Academics



Majors: 37 undergraduate  
Minors: dozens  
Pre-Professional: Several tracks available.

*Refer to the [Graceland online catalog](#) for a complete list.*

Average Class Size: 18  
Total Courses: 341

Average Class Size for first time freshman: 23  
Total Courses for first time freshman: 134  
First time freshman courses with 25 or fewer students: 73%

#### Class Size Ranges:

- 102 10 or less students
- 139 11-20 students
- 78 21-40 students
- 22 41 or more students

### Faculty



Student to Faculty Ratio: 13:1  
Faculty: 60 full time and 45 part time  
Doctorate or other terminal degree: 85%

Fulbright Scholars: 4

## Student Involvements

### Visual and Performing Arts annual participation: 35%

*Students who enrolled in a Visual and Performing Arts course, this semester or previous semester.*

### Athletics annual participation: 58%

*Athlete is any student who has had eligibility checked for a sport for a given year, excluding student coaches and managers. Each student is counted only once regardless of how many sports they participate in.*

Athletic Teams: 22 Varsity / 11 Junior Varsity

Clubs and Organizations: 48

Leadership Positions: 204

Work Study Position: 810

## Rankings & Awards

**Recognized by *The Princeton Review*** - "Best in the Midwest". (2015)

**Recognized by *The Princeton Review*** - Guide to 353 Green Colleges (2015)

**US News and World Report** first tier in the Regional University - Midwest category in the *U.S. News & World Report* Best Colleges rankings (2010-2014)

Graceland was accepted and participated in:

- Association of American Colleges and Universities High-Impact Educational Practices (AAC&U HIP)
- American Council on Education's Change and Innovation Lab (ACE-CIL)

## Costs and Financial Aid

Tuition: [click here](#) for details.

Financial aid: Over 98% of residential students receive aid.

The cost of books and supplies varies by program. The amount provided as expected budget is \$520.00 *per semester* for purchase of books and supplies for undergraduate on-campus programs.

## Student Success

### First year to second year: 60.10%

*Retention rates are calculated as a percentage of the first year students in a given cohort who return for their second year at the same institution.*

Historical retention rates are located on the [Student Success](#) (Resources > Institutional Research > Student Success)

## Graduation and Beyond

Graduated within 4 years: 23.6% (2010 Cohort)

Graduated within 5 years: 49.5% (2009 Cohort)

Graduated within 6 years: 53.8% (2008 Cohort)

*Graduation rates include only those students who started a first-year students in the year indicated. Percentages are cumulative.*

Historical graduation rates are located on the [Student Success](#) page (Resources > Institutional Research > Student Success)

### Bachelor's Degrees Awarded (by school/college) :

- 33 C.H. Sandage School of Business
- 88 School of Nursing
- 88 Edmund J. Gleazer School of Education
- 114 College of Liberal Arts & Sciences



Over 82% of graduates responding to a 2014 survey were employed or attending graduate school within six months of graduation.

---

**Annual Gift Commitments**

\$6,848,956 for entire University (as of May 31, 2014)

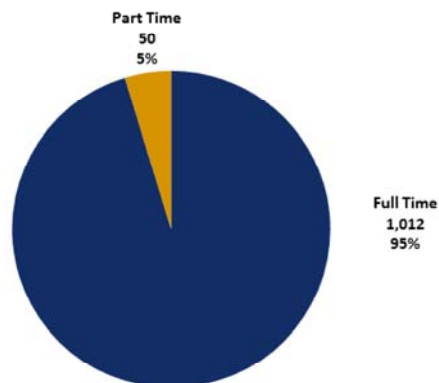
## Visuals (graphs & charts)



### Student Hours



Lamoni Campus  
Fall 2014

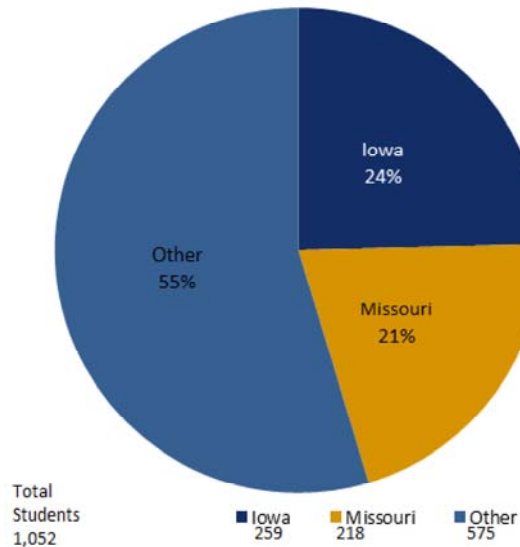


Source: Locked Official Enrollment List

### Location



Lamoni Campus  
Undergraduate Students  
Fall 2014



Includes: Full-time and Part-time

Source: Locked Official Enrollment List

## Trends - Lamoni

### Lamoni Campus - 5 Year Trends

Includes full-time and part-time students unless noted.  
Source: Locked Official Enrollment List

#### First Generation Students

Year	First Generation	Total	First Generation Percentage
2010	215	920	23%
2011	225	936	24%
2012	228	951	24%
2013	273	1058	26%
2014	237	1052	23%

#### International Students

Year	International	Total Students	International
2010	119	920	13%
2011	120	936	13%
2012	104	951	11%
2013	101	1058	10%
2014	88	1052	8%

International = Non-US citizens

#### Diversity

Year	Diverse	White	Non-US Citizens	Unknown	Total Students	Race/Ethnic Diversity
2010	217	526	119	58	920	24%
2011	239	525	120	52	936	26%
2012	245	559	104	43	951	26%
2013	286	630	101	41	1058	27%
2014	289	630	88	45	1052	27%

Diverse = Student who self-identify as African American, Hispanic, Asian, Pacific Islander or Native American

#### Gender

Year	Male	Female	Total	Male to Female Ratio
2010	499	421	920	54% male, 46% female
2011	528	408	936	56% male, 44% female
2012	514	437	951	54% male, 46% female
2013	579	479	1058	55% male, 45% female
2014	605	447	1052	58% male, 42% female

#### Lamoni Campus - First Year Students Only

Year	Male	Female	Total	Male to Female Ratio
2010	136	84	220	62% male, 38% female
2011	142	117	259	55% male, 45% female
2012	122	109	231	53% male, 47% female
2013	183	143	326	56% male, 44% female
2014	184	98	282	65% male, 35% female

#### Community of Christ

<b>Year</b>	<b>Community of Christ</b>	<b>Total Students</b>	<b>Total Community of Christ</b>
<b>2010</b>	339	920	37%
<b>2011</b>	323	936	35%
<b>2012</b>	339	951	36%
<b>2013</b>	340	1058	32%
<b>2014</b>	321	1052	31%

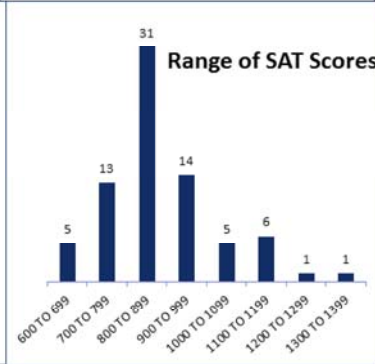
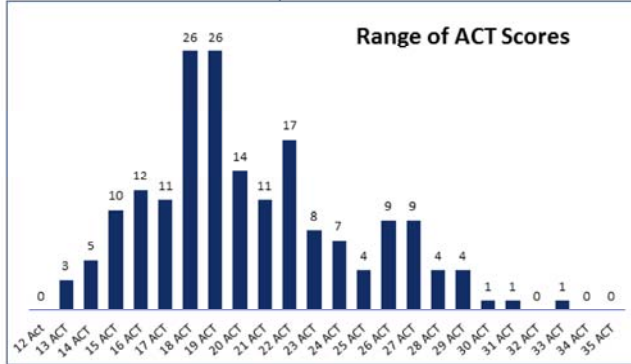
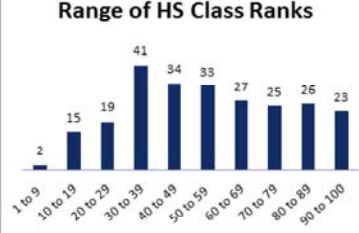
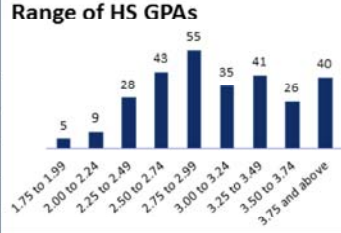
Student indicates they are Community of Christ or appear in headquarters database.

# Freshmen Class Profiles



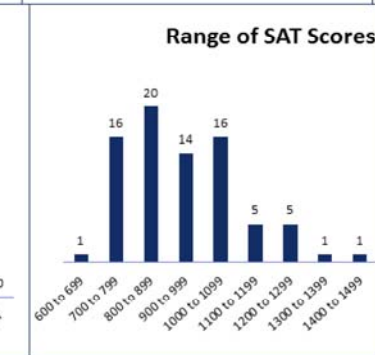
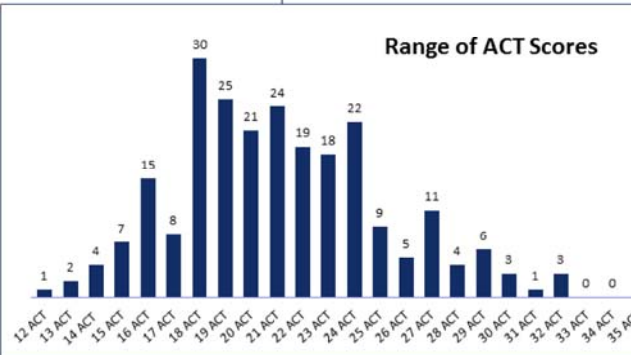
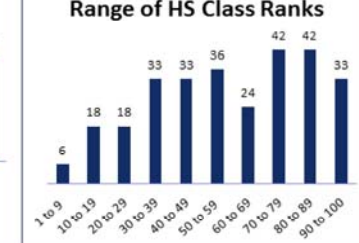
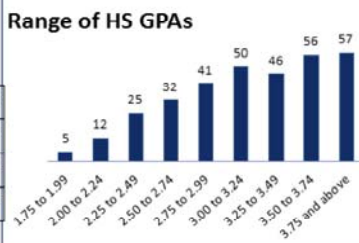
## Class Profile - Fall 2014 First Year Students

Class Profile First Year Students	
Average HS GPA (282 students)	3.08
Average Class Rank (245 students)	55
Average ACT score (183 students)	20.4
Average SAT score (76 students)	879



## Class Profile - Fall 2013 First Year Students

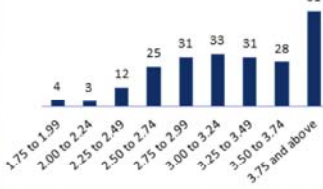
Class Profile First Year Students	
Average HS GPA (324 students)	3.19
Average Class Rank (285 students)	59
Average ACT score (238 students)	21.1
Average SAT score (79 students)	940



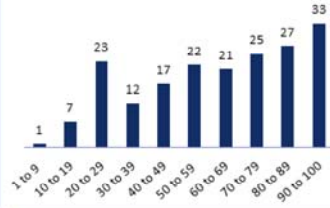
**Class Profile - Fall 2012 First Year Students**

Class Profile First Year Students	
Average HS GPA (228 students)	3.28
Average Class Rank (188 students)	62
Average ACT score (158 students)	21.6
Average SAT score (63 students)	933

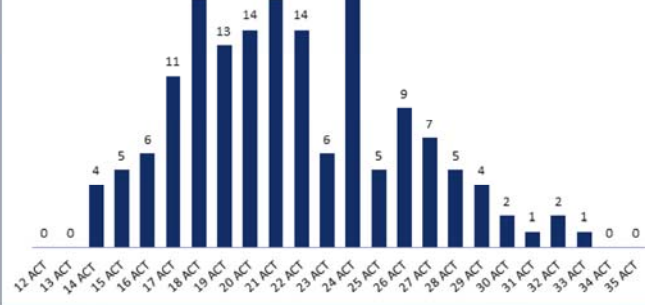
**Range of HS GPAs**



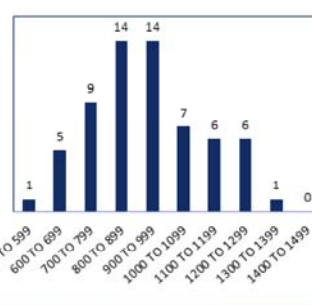
**Range of HS Class Ranks**



**Range of ACT Scores**



**Range of SAT Scores**



Source: Locked Official Enrollment List

## High School (ACE Program)



---

### High School Dual Enrollment (ACE; Accelerated College Education)

Enrollment: 178

Source: *Locked Official Enrollment List*

Opportunities are available for high school 11th- and 12th-grade students (and 9th- and 10th-grade talented and gifted students).

Learn more about Graceland's Ace Program [here](#).

## Independence - Coming Soon



### Coming Soon



Information similar to the Lamoni section of the GU Fact Book is being compiled for programs managed out of the Independence campus.

There is a sneak peek is below, but watch for an announcement once it is complete.

### Rankings and Awards



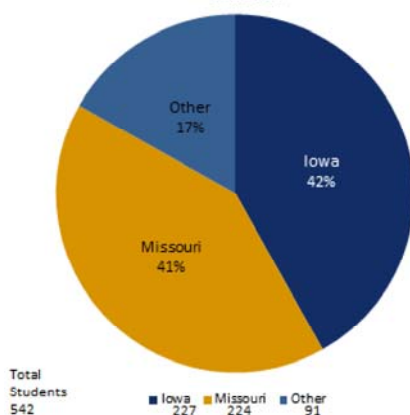
**US News & World Report** ranked #9 in the nation for "Best Graduate Online **Nursing** Program" (2015)

**US News & World Report** ranked #5 in the nation for "Best Graduate Online **Education** Program" (2015)

### Location



Independence, Online & Additional Locations  
Undergraduate Students  
Fall 2014



Includes: Full-time and Part-time

Source: *Locked Official Enrollment List*

### Enrollment



All Graceland Locations: 1,956 FTE (IPEDS calculation for Full-Time Equivalent )

Lamoni Undergraduate: 1,052 (full-time & part-time)

Lamoni Undergraduate: 1,012 (full-time)

High School: 178 (full-time & part-time)

Online: 934 (full-time & part-time)

Independence: 200 (full-time & part-time)

Centerville & Trenton: 43 (full-time & part-time)

Source: *Locked Official Enrollment List*