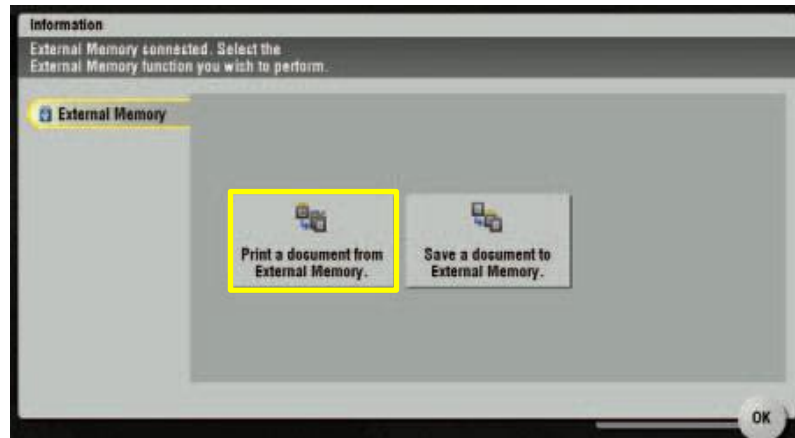
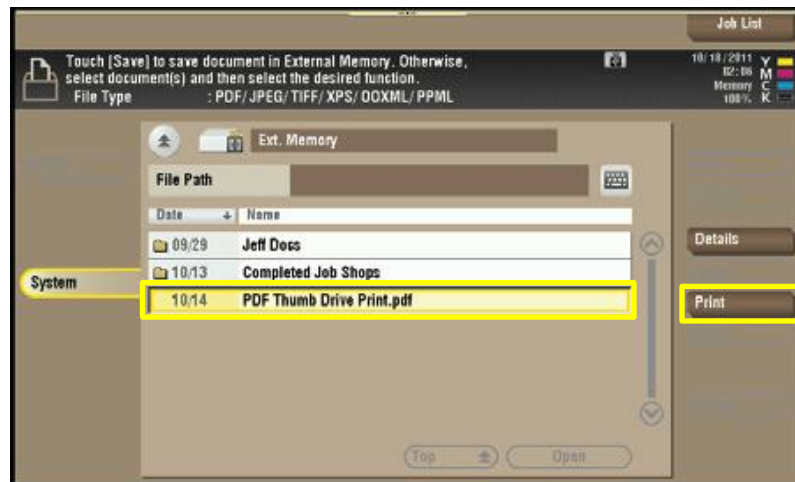


Print from a USB Thumb Drive

1. Plug in your **Thumb Drive** into the MFP's **USB Port**
Note: The USB port is located at the upper right side of the device towards the front
2. A screen comes up on the MFP that tells you an external memory is connected. Touch **Print Document from External Memory**
3. Files on your **Thumb Drive** will appear on the MFP's screen



4. Touch the desired folder (or file)
5. Touch **Open** (if you **Select** a folder)
Note: If it is a file you can print, touch the Print tab on the right. Only files in a format that can be printed are displayed
6. Select desired original file
7. Touch **Print**



8. **Basic & Application** screen comes up
9. If necessary, specify any other print settings by touching **Color** tab, **Paper** tab, **2-Sided** tab or **Finishing** tab
10. Press **Start**

